

Strategy Evaluation Modules

Illuminate Trainings

Early Childhood Family Support – Nov. 3 (Rebekah Hudgins, Lead)

Elementary Students – Nov. 5 (Valerie Hutcherson, Lead)

Middle School Students – Nov. 17 (Julie Sharpe, Lead)

High School Students – Nov. 19 (Ann Peisher, Lead)



This Session Today – November 3

Early Childhood Family Support

Moderators:

- Rebekah Hudgins
- Julie Sharpe

The Chat Box and Speaking

- Questions
- Comments



Participants Tools Window

- **Raise/Lower Hand** – Click on hand with an **up arrow** to ask a question during meeting. A **number** will **display** to alert moderator.
- **Emoticons** – Smiley faces and hands **without arrow** can be used to alert moderator. When smiley face and/or hands are clicked **they will blink** for a few seconds then **stop**. **Note:** The moderator will determine at the beginning of meeting their use.
- **Step Away** – If you get interrupted **during** the meeting click on the **door with arrow**. Your name will display with the words **Away** indicating to others you have left the meeting. When you return to meeting **click** on door again.

Our Objectives:

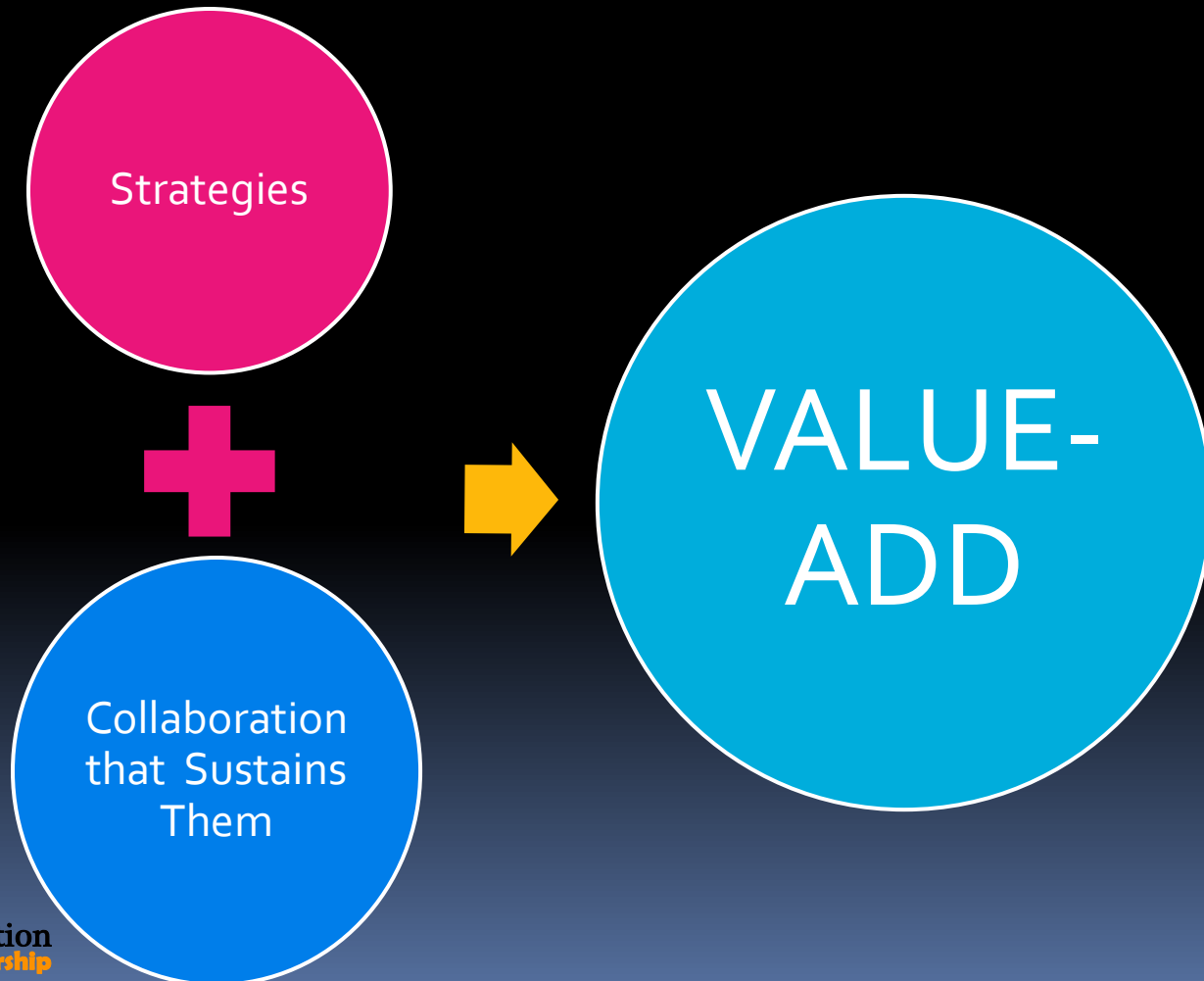
- Continuing Importance of Strategy Evaluation.
- How the Strategy Evaluation Modules (SEMs) can help.
- Organization of the SEMs.
- Core elements of this module.
- Evaluation Team support for you and the SEMs.

Your Big Question
(probably)-

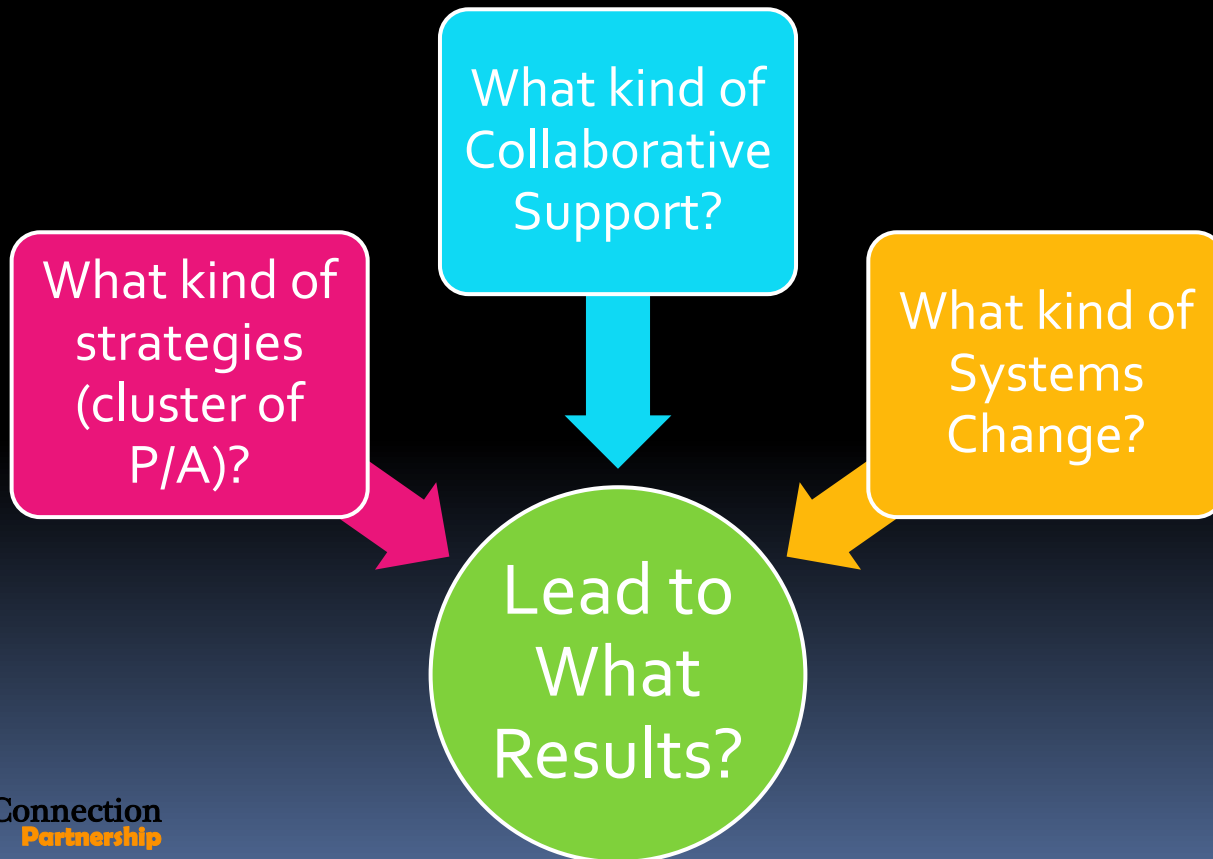


Why continue this
emphasis – especially now?

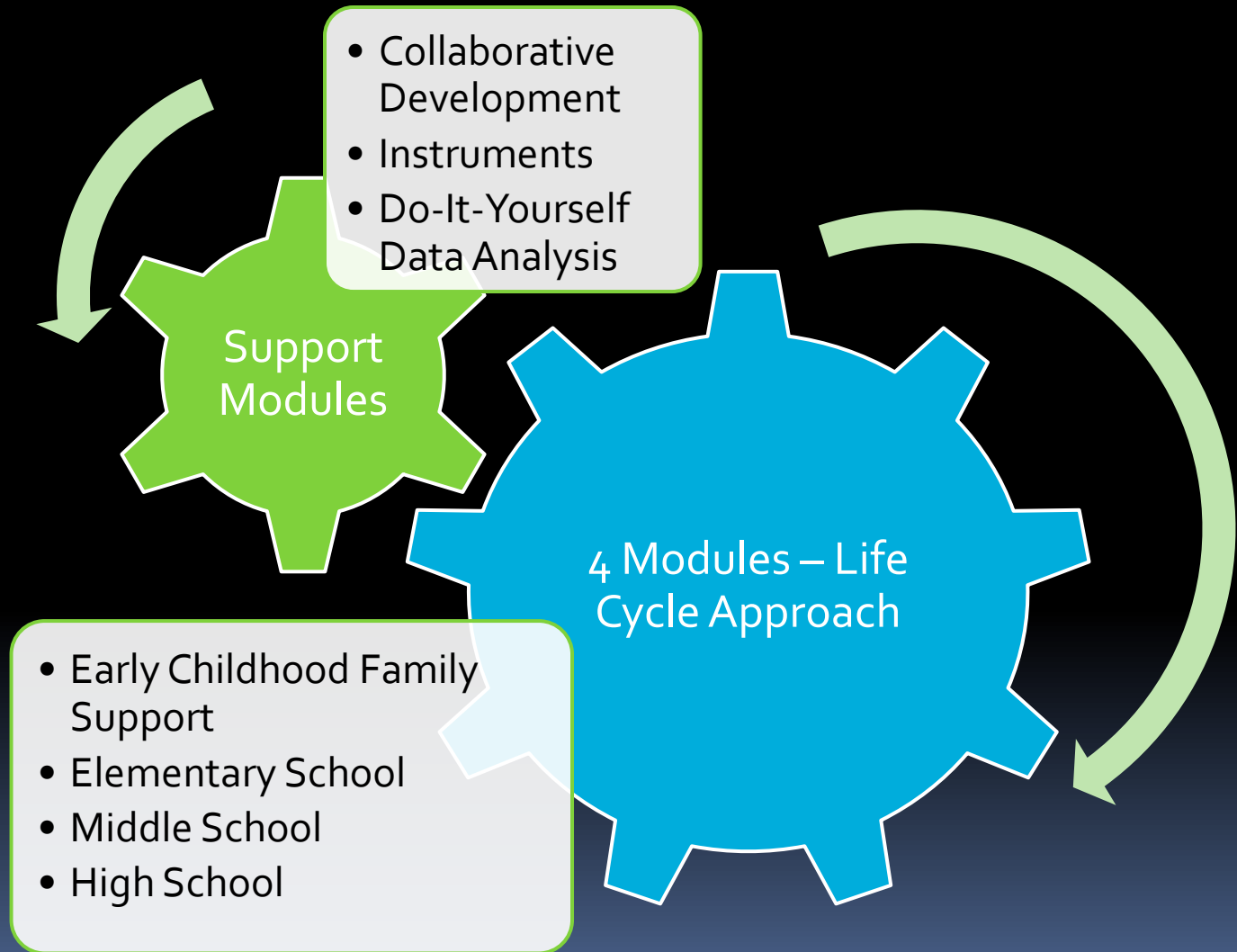
We Must Continue to Prove Our Worth! Our VALUE-ADD!



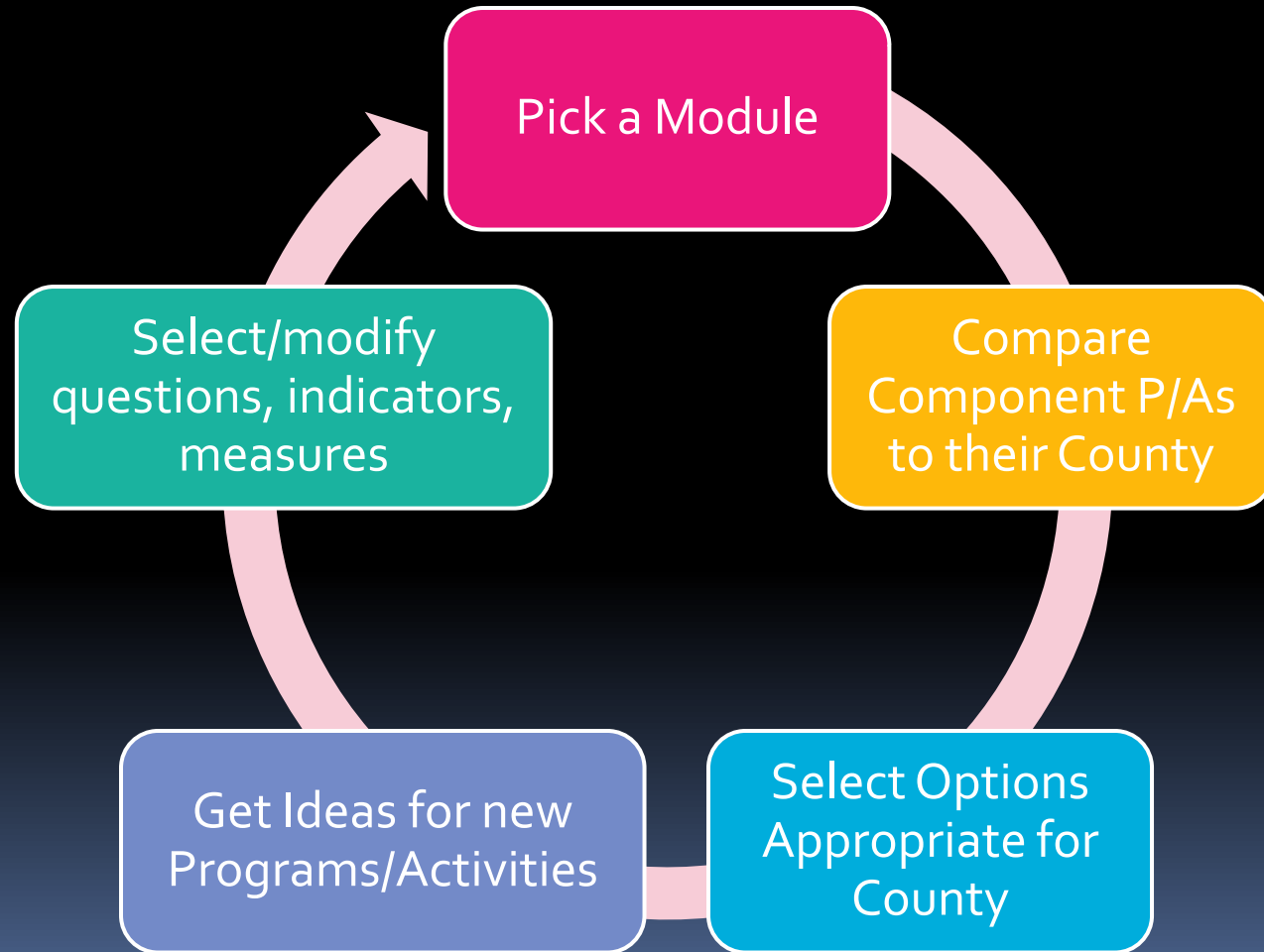
We Need to Know -



What's Included?



How will Counties Use SEMs?



A Successful Strategy Evaluation Depends On

At Least Two (2) Strong Program Evaluations
(Committed Partners)

Program
1

Program
2

Participation Data

Enrollment

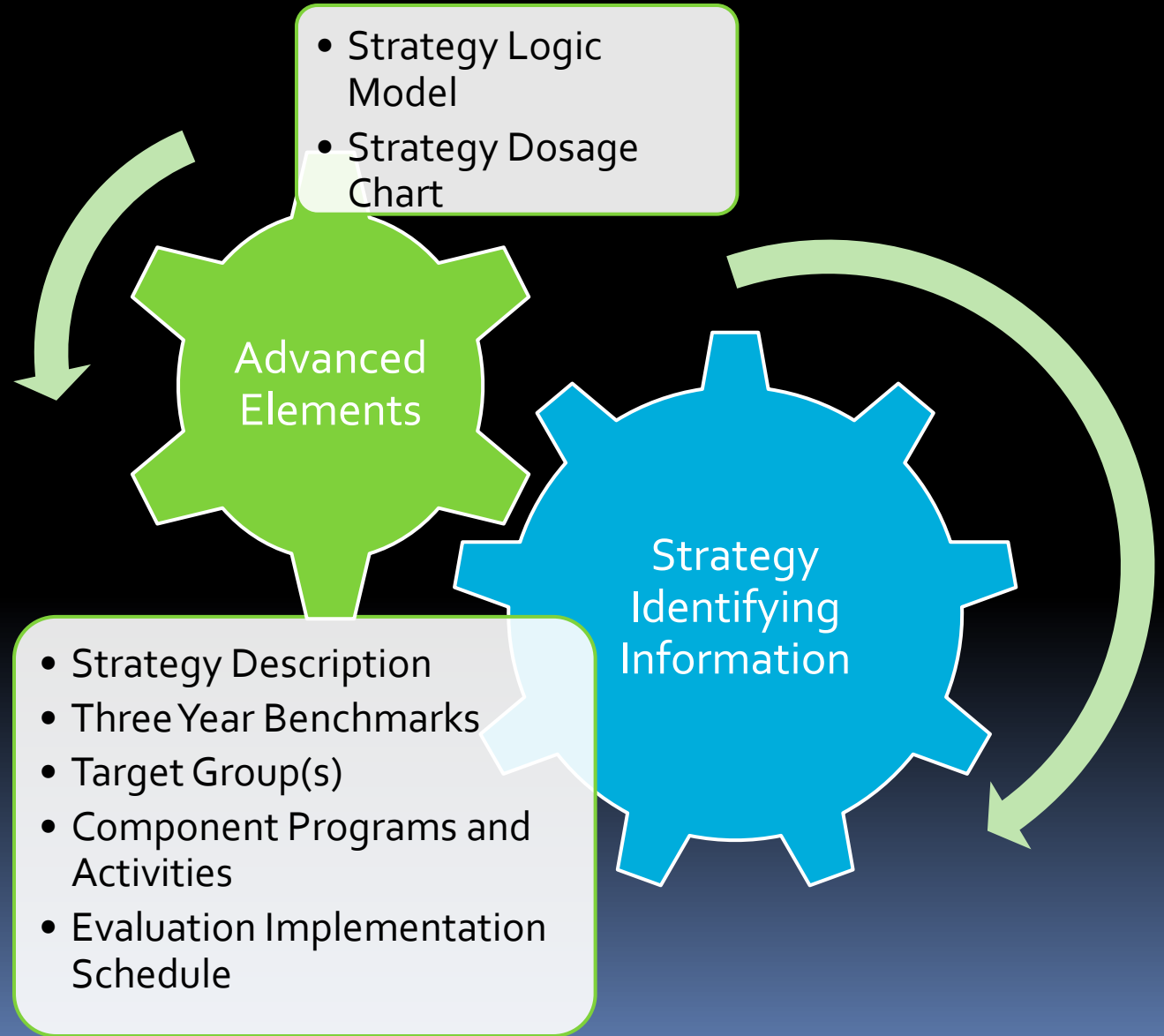
Duration of
Involvement

Frequency

Total Contact
Hours

Program-Specific
Outcome Data
(Ideal)

Strategy Identifying Information



Strategy Description Example

1a: Brief Strategy Description:

Early Childhood and Family Support Strategy will provide support to families with children, ages birth to four years to promote self-sufficiency in families and improve the physical, educational, social, and emotional outcomes of young children.

Evaluation Implementation Schedule Example

1e: Evaluation Implementation Schedule:

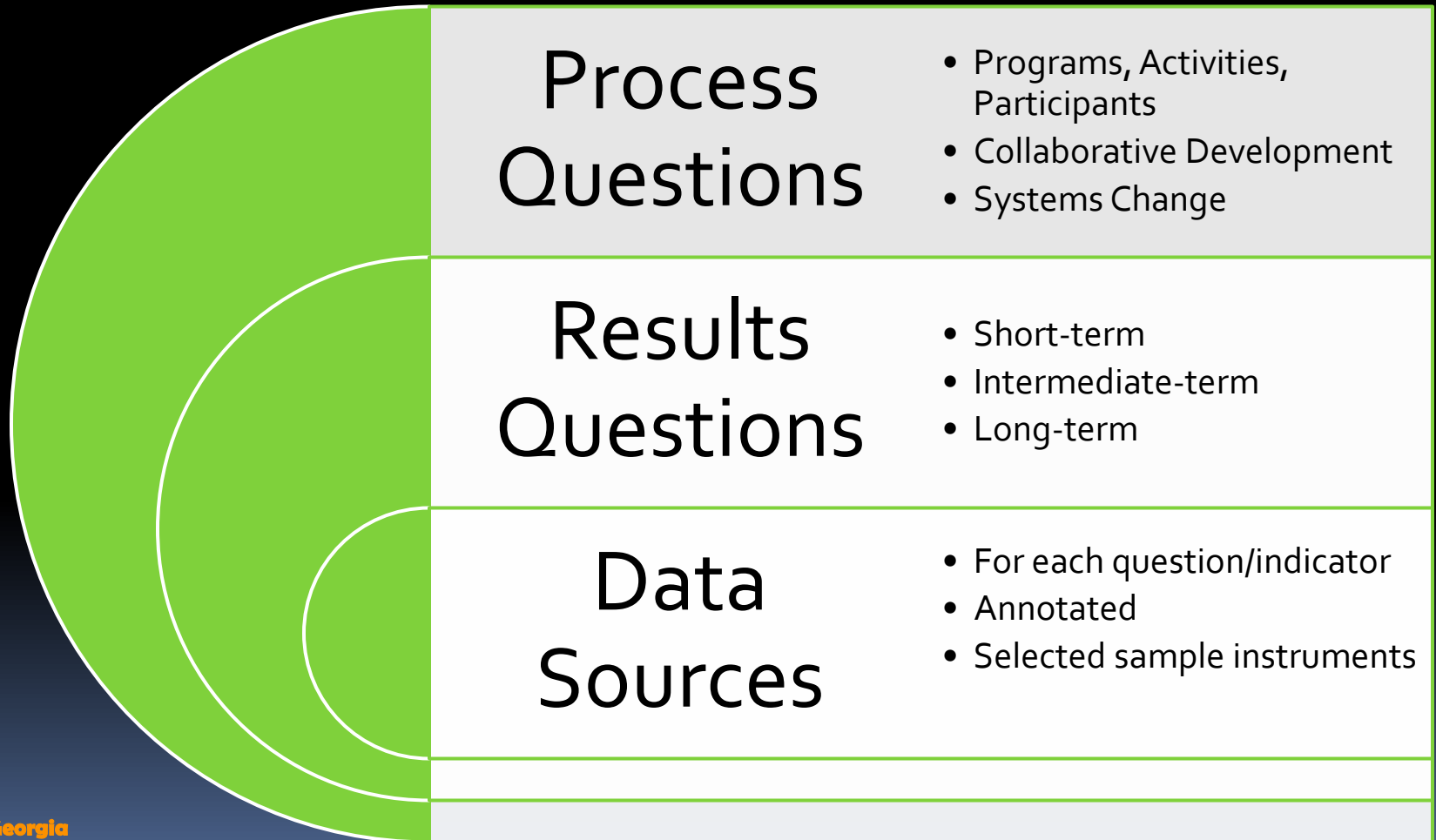
Year 1: we will concentrate on developing our evaluation system so that each partnering program is regularly providing a list of participants and complete dosage data and all data are maintained in an Excel database.

Year 2: We will continue data collection and compare baseline data with second data collection and show emerging results.

Year 3: We will compare changes over the total enrollment, examine the affect of dosage and compare results for families who stayed in one or more programs with families who dropped out totally.



Questions, Indicators, Data Sources



Questions, Indicators, Data Sources Process Example

- ***Q. How many families and children were served and what was their demographic profile?***
- I. Number of families and children served, race/ethnicity, age, gender, other demographics
- ***Data Sources***
- Program intake forms, program participation records

Questions, Indicators, Data Sources

Short-term Results Example

- ***Q. How did parents view of their children and their own parenting change?***
- I. Parent empathy, expectations, family roles, involvement, interaction with child, safety in home
- ***Data Sources***
- HOME, Adult and Adolescent Parenting Inventory-II

For Each Set of Questions,
Indicators, Data Sources

Data Collection Schedule

Date
Collected

Responsible
Party

Date
Submitted

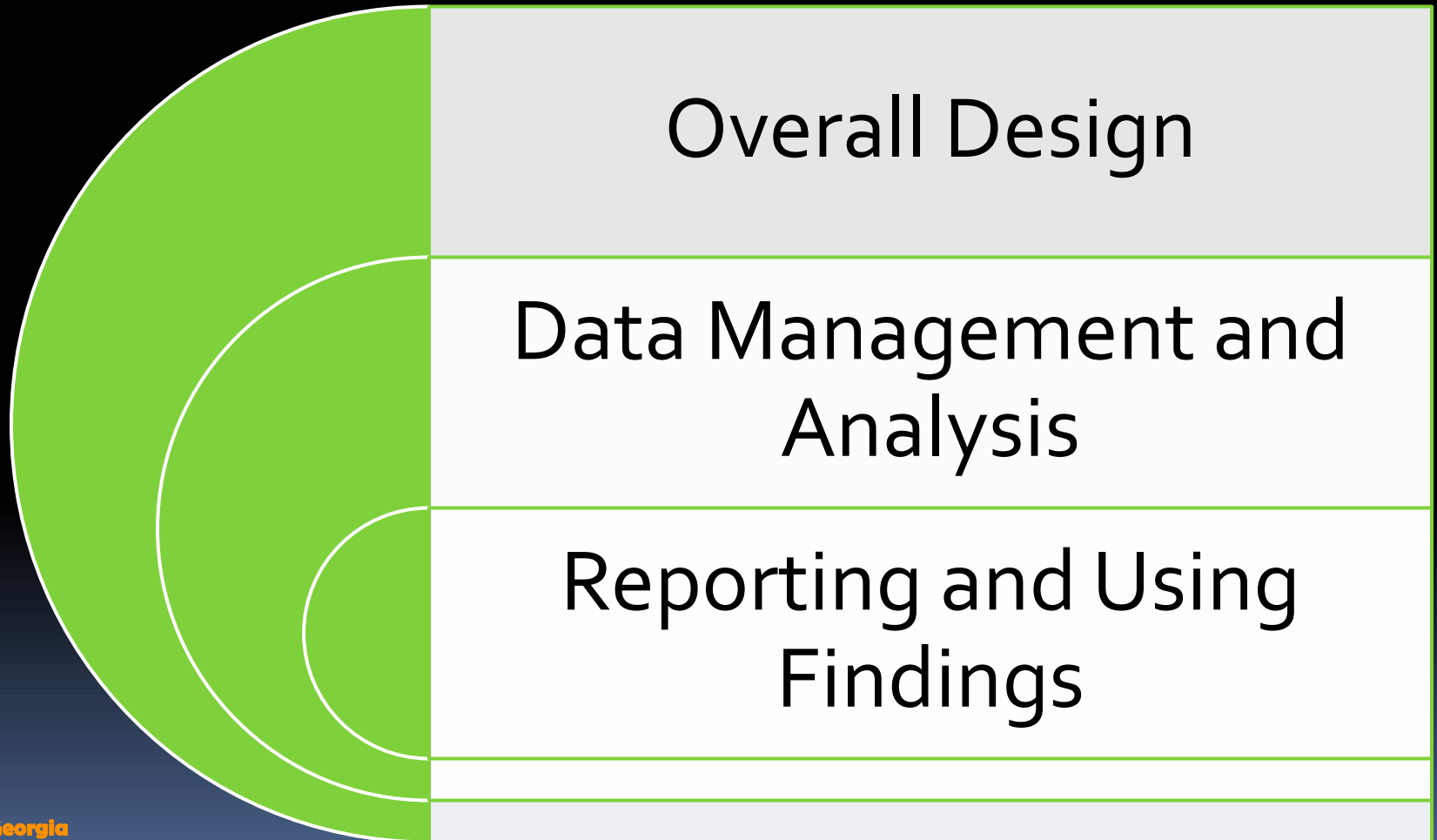
To Whom
Submitted

Data Collection Schedule Example

AAPI-II and HOME

- Dates Collected: Intake, 6 months, 1 year and 2 years
- Responsible Party: Program personnel
- Dates Submitted: Quarterly
- To Whom Submitted: Evaluation Manager

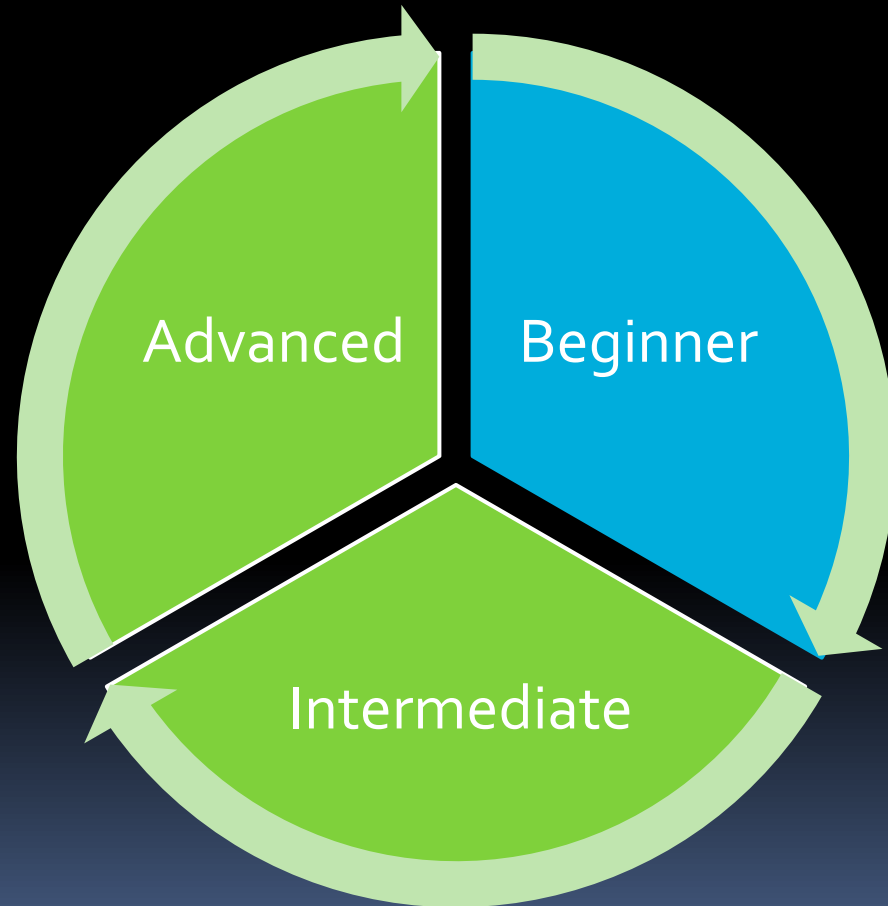
Final Core Elements-



Design and Data Management Example

- Overall Design: Longitudinal Design with participant tracking
- Data Management and Analysis: Family and individual level data will be maintained in an ACCESS database. Descriptive statistics will be used in each report to describe target group, services and key changes. Pre-post and other analysis will be conducted with Excel or SPSS. Participant outcomes will be compared with county-level indicators as appropriate.

More About Do-It-Yourself Data Analysis





Do-It-Yourself Data Analysis

Beginner to Advanced

Data Management

- Paper, Pencil, Notebooks
- Excel Spreadsheet
- Access Database

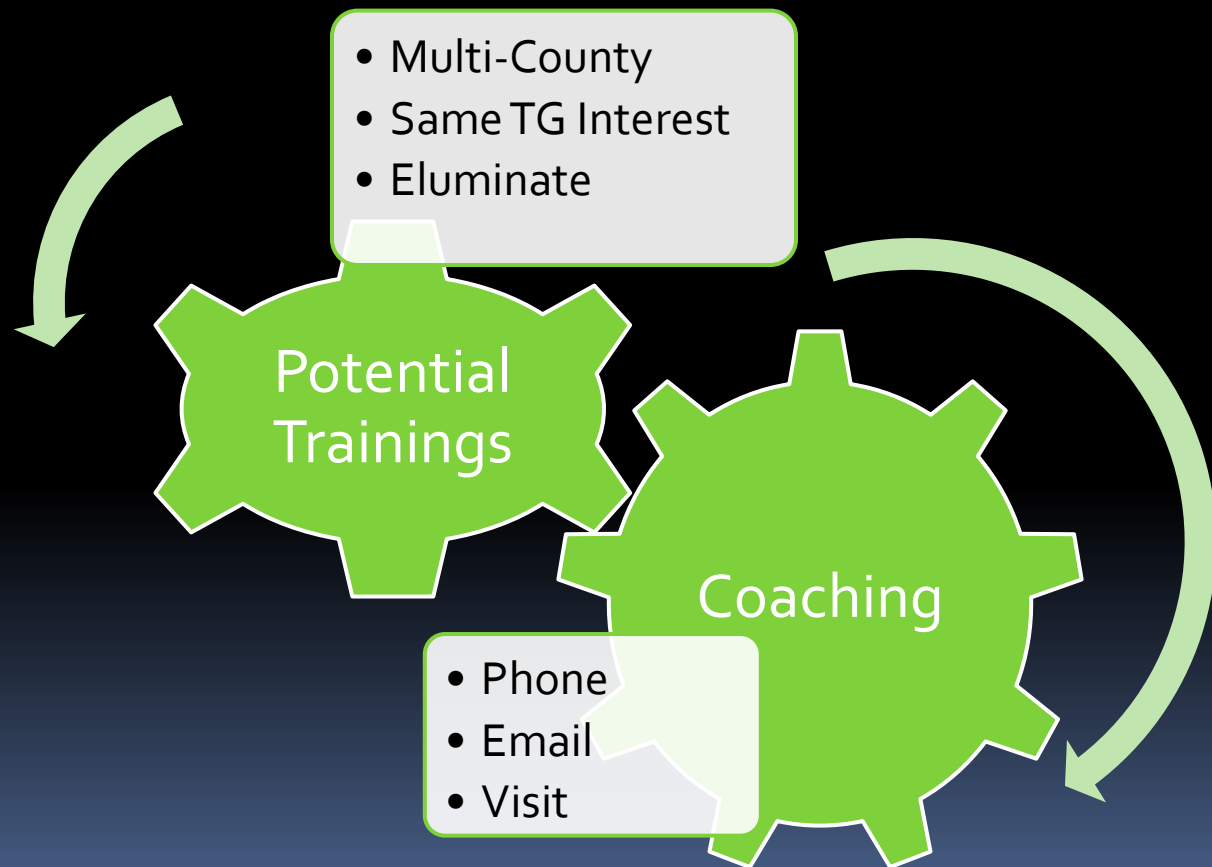
Analysis

- Descriptive Statistics
 - Means
 - Frequencies
 - Ranges
- Correlation
- ANOVA, Regression

Reporting and Using Findings Example

- Reporting and Using Findings: Quarterly and annual reports will be provided to the strategy team and full collaborative. The strategy team is responsible for working with the local evaluator to complete an annual GaFCP Evaluation Progress Report and the 3-year Evaluation Results Report. The strategy committee will review the quarterly report to discuss progress, challenges and make any needed mid-year corrections regarding the program, staffing and funding. The annual report will be provided to the collaborative and all involved partners for their discussion and input.

Support – What You Can Expect?



You'll Never Be Alone!





Type questions in
chat box; Send to the
Room.