

Strategy Evaluation Modules

Eluminate Trainings

Early Childhood Family Support – Nov. 3 (Rebekah Hudgins, Lead)

Elementary Students – Nov. 5 (Valerie Hutcherson, Lead)

Middle School Students – Nov. 17 (Julie Sharpe, Lead)

High School Students – Nov. 19 (Ann Peisher, Lead)



This Session Today – November 5

Elementary School Students & Families

Moderators:

- Valerie Hutcherson
- Rebekah Hudgins

The Chat Box and Speaking

- Questions
- Comments





Participants Tools Window

- **Raise/Lower Hand** – Click on hand with an **up arrow** to ask a question during meeting. A **number** will **display** to alert moderator.
- **Emoticons** – Smiley faces and hands **without arrow** can be used to alert moderator. When smiley face and/or hands are clicked **they will blink** for a few seconds then **stop**.
- **Step Away** – If you get interrupted **during** the meeting click on the **door with arrow**. Your name will display with the words **Away** indicating to others you have left the meeting. When you return to meeting **click** on door again.

Our Objectives:

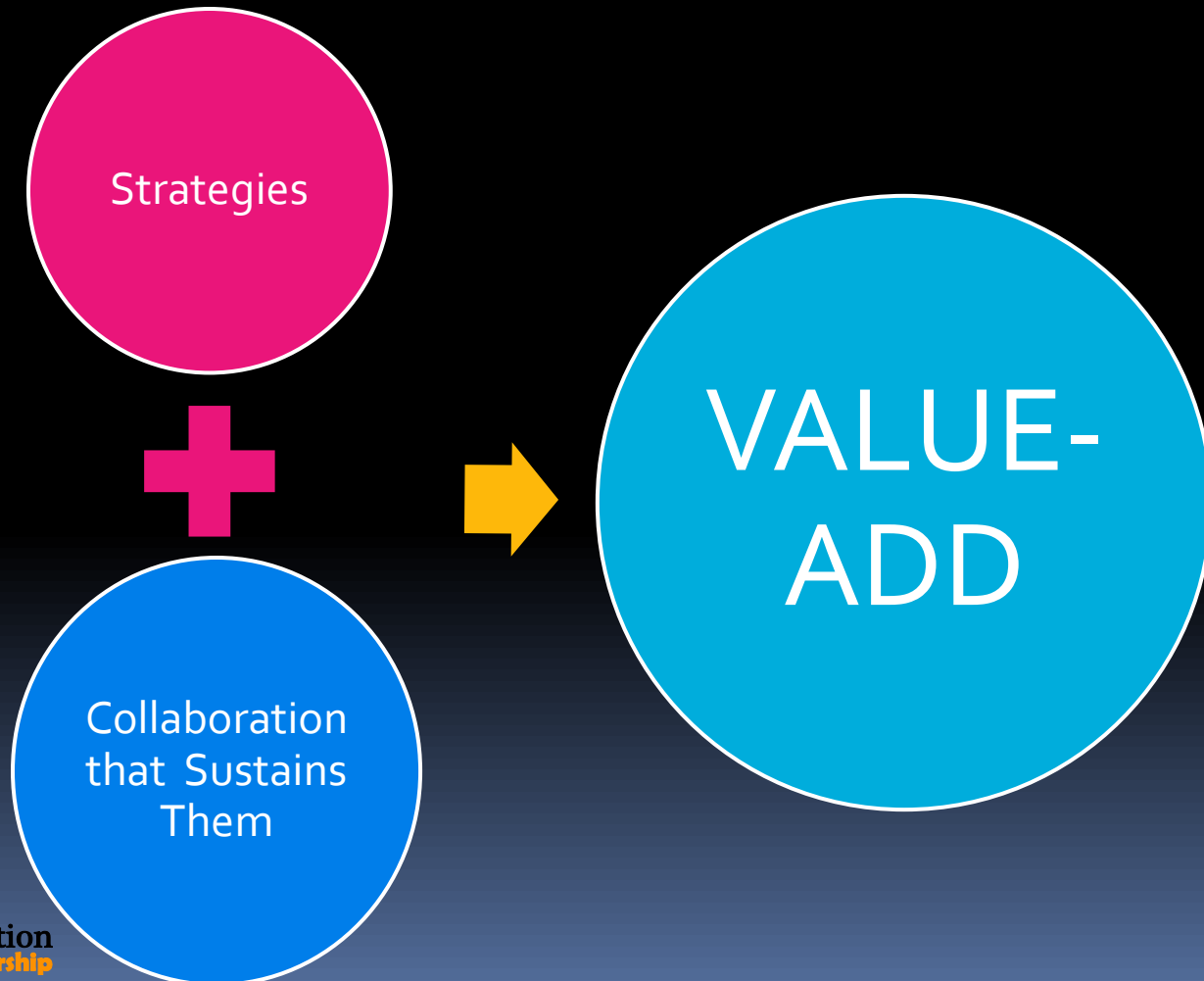
- Continuing Importance of Strategy Evaluation.
- How the Strategy Evaluation Modules (SEMs) can help.
- Organization of the SEMs.
- Core elements of this module.
- Evaluation Team support for you and the SEMs.

Your Big Question
(probably) -

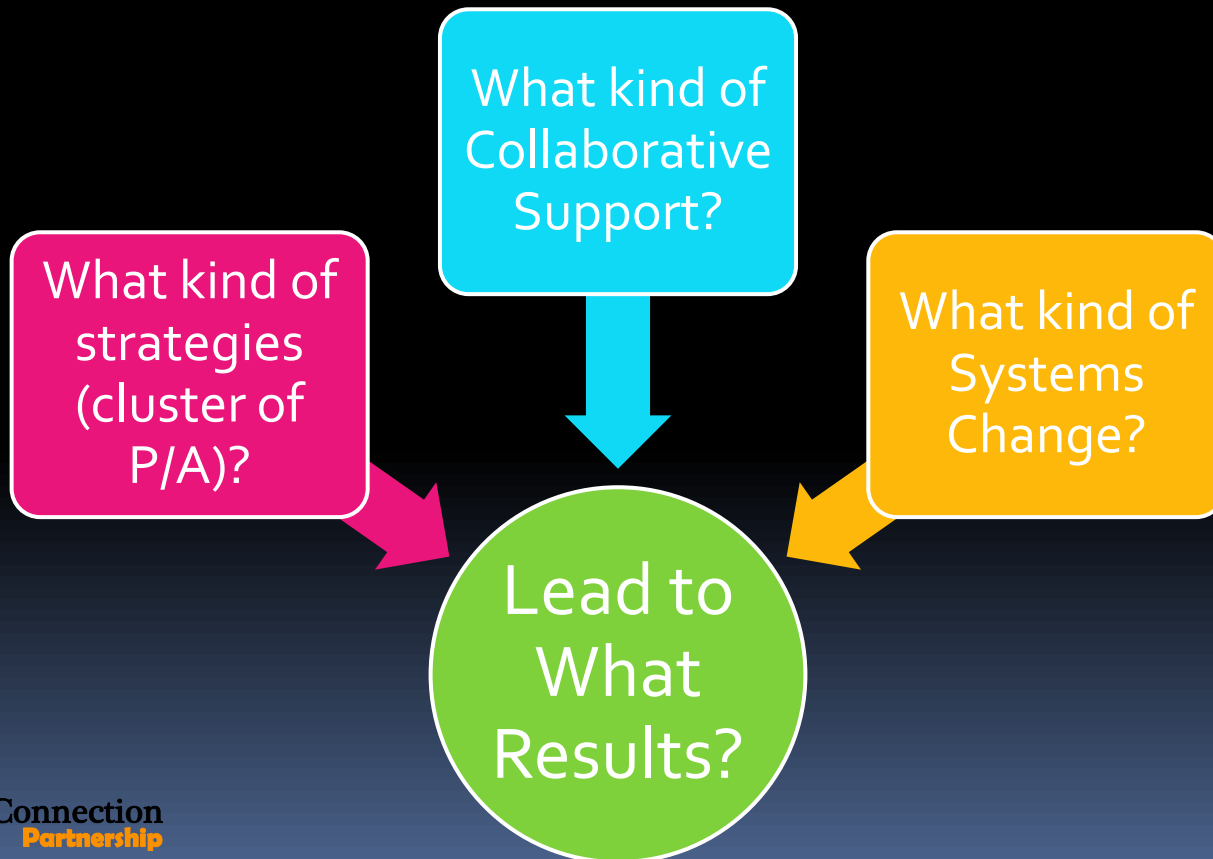


Why continue this
emphasis – especially now?

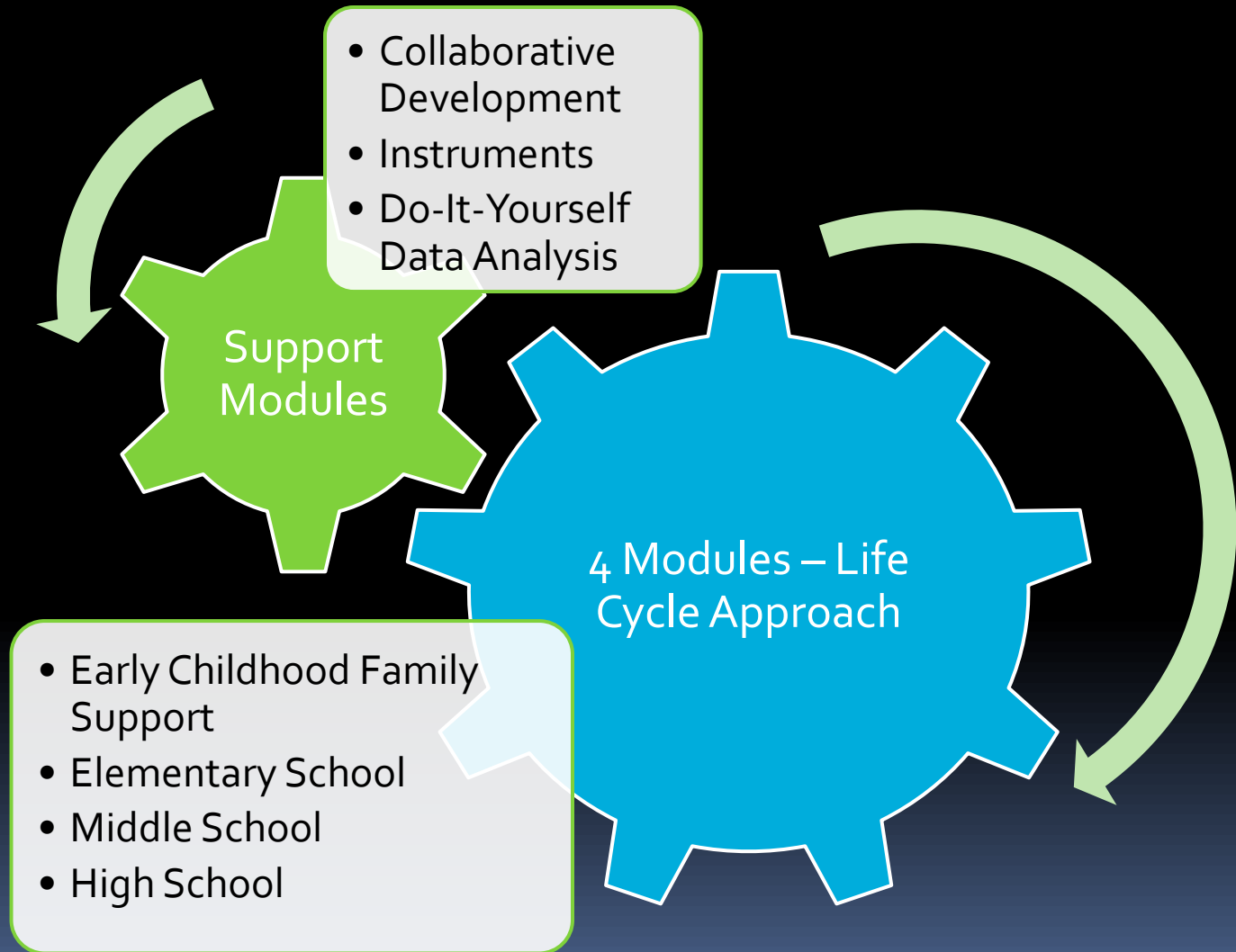
We Must Continue to Prove Our Worth! Our VALUE-ADD!



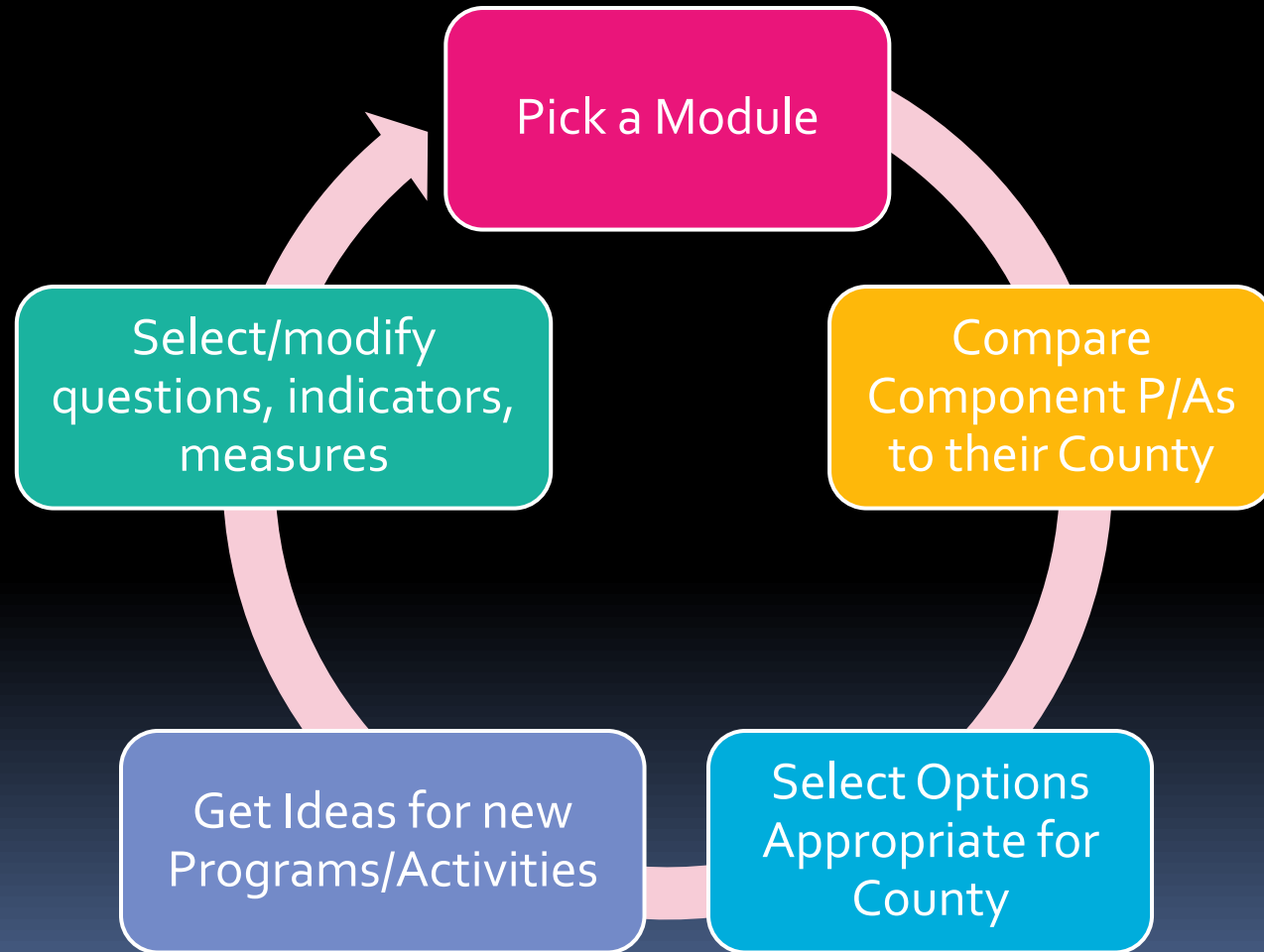
We Need to Know -



What's Included?



How will Counties Use SEMs?



A Successful Strategy Evaluation Depends On

At Least Two (2) Strong Program Evaluations
(Committed Partners)

Program
1

Program
2

Participation Data

Enrollment

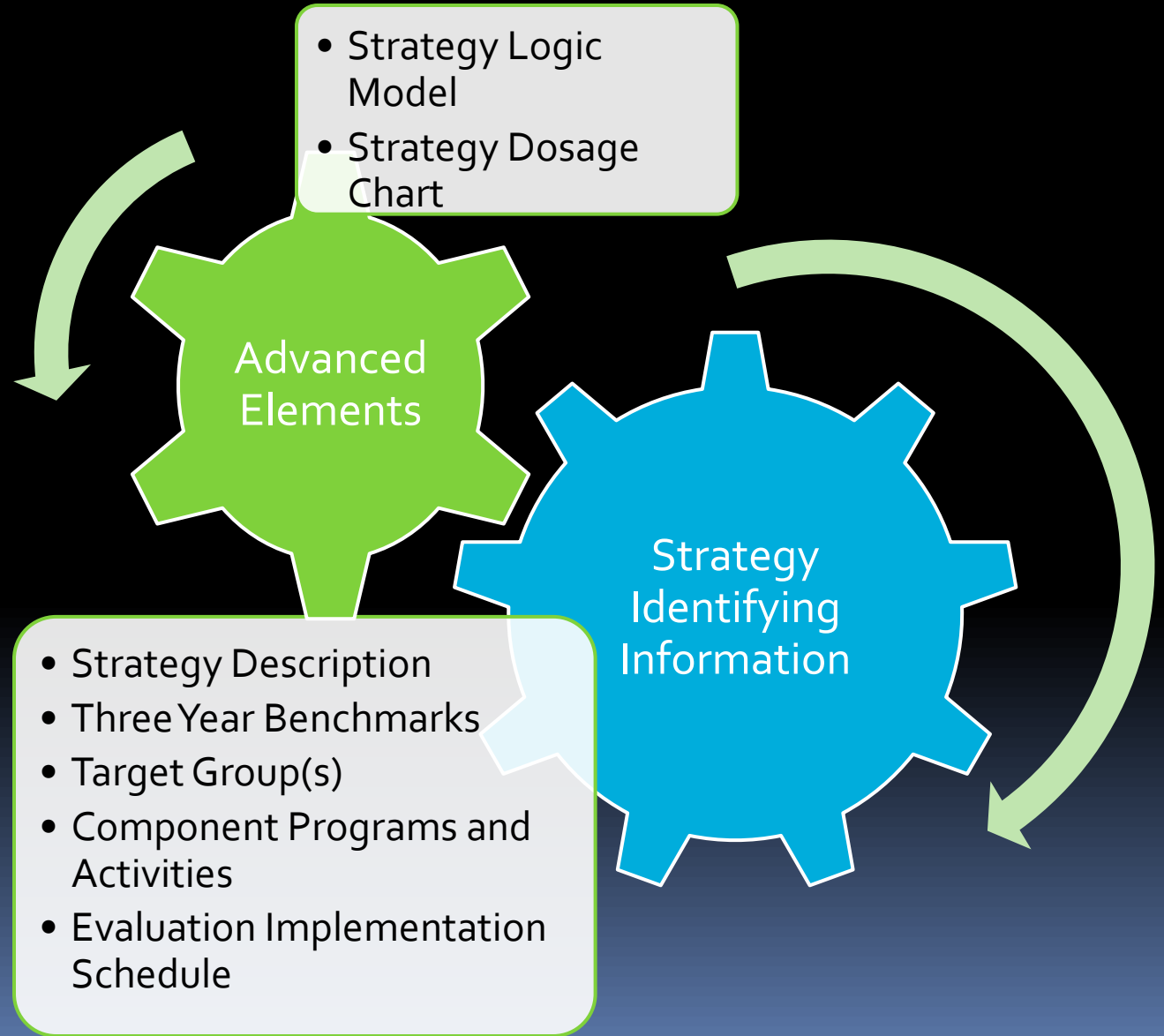
Duration of
Involvement

Frequency

Total Contact
Hours

Program-Specific
Outcome Data
(Ideal)

Strategy Identifying Information



Strategy Description Example

1a: Brief Strategy Description:

The Elementary School Strategy will provide academic support and enrichment activities to at risk elementary school students to increase their developmental assets and ensure school success.

-
-

Sample Strategy Dosage Chart

Target Groups	Program Saturation	Intensity	Duration	Total Contact Hours
125 1 st – 5 th grade students	After school enrichment program	2 hrs day/5 days wk (10 hrs/wk)	30 weeks	300 hours
50 students in grades 1-5	One-on-one mentoring	1 hr/ week	30 weeks	30 hours
	Group activities	2 hrs/ mo	9 months	18 hours
30-40 identified students	Individualized tutoring	1 hr/2x week	30 weeks	60 hours
Parents of 125 after school program participants	Family engagement activities	-2 hr program	1x/quarter	8 hrs
125 1 st – 5 th grade students	Summer Reading Program	5 hrs day/ days per week	6 weeks	150 hrs

Evaluation Implementation Schedule Example

1e: Evaluation Implementation Schedule:

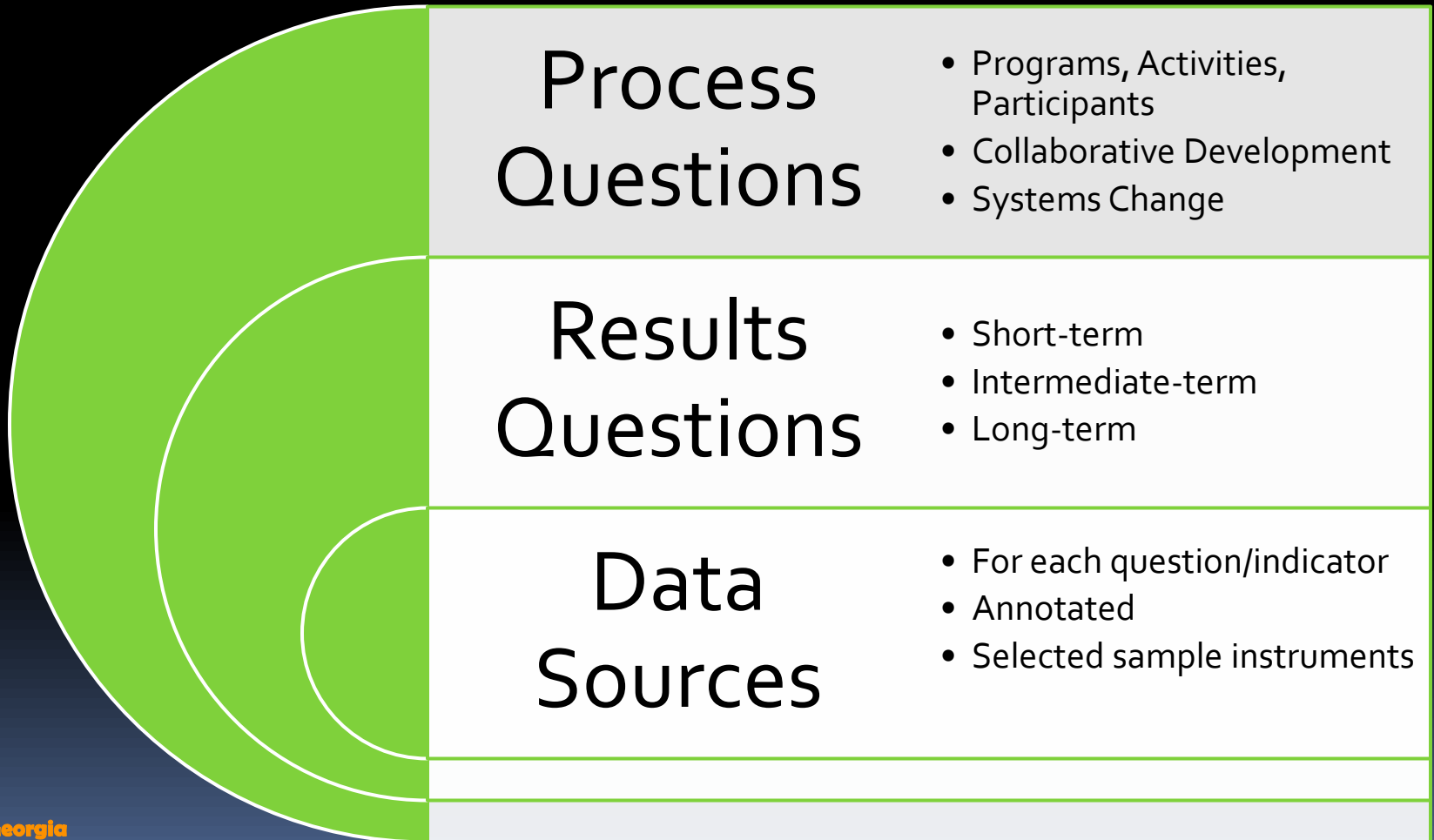
Year 1: We will put together a solid evaluation system which clearly delineates the work of each partnering agency including what data are to be collected, administration schedule, data collection forms and the development of our strategy database. Our year 1 progress report will summarize the implementation process and provide a summary of the demographic characteristics of all participants and their families. We will also include a summary of the baseline (pre) survey results.

Year 2: We will compare baseline data with second year data and discuss these preliminary results.

Year 3: We will compare changes that have occurred over the three year period and conduct analyses to determine the impact of dosage for students who have been engaged in multiple programs for more than one year.



Questions, Indicators, Data Sources



Questions, Indicators, Data Sources

Process Example – Participants

- *Q. How many at-risk students were identified and what were their demographic characteristics?*
- I. Number of children identified, race/ethnicity, age, gender, other demographics
- *Data Sources*
- Program intake forms, program records

Questions, Indicators, Data Sources

Process Example – Collaborative Dev.

- *Q. How did collaborative partners work with the school to coordinate activities and collect data?*
- I. Coordination among partners.
- *Data Sources*
- Strategy Team Minutes, Training Curriculum

Questions, Indicators, Data Sources

Short-term Results Example

- ***Q. Did students' attitude toward school improve?***
- I. student attitudes
- ***Data Sources***
- Afterschool Program Survey, Parent Survey, Mentor-Mentee Surveys

Questions, Indicators, Data Sources

Long Term Results Example

- *Q. Did the percentage of students meeting the standard on the reading and math CRCT increase?*
- I. Math and Reading CRCT scores
- *Data Sources*
- CRCT Scores

For Each Set of Questions,
Indicators, Data Sources

Data Collection Schedule

Date
Collected

Responsible
Party

Date
Submitted

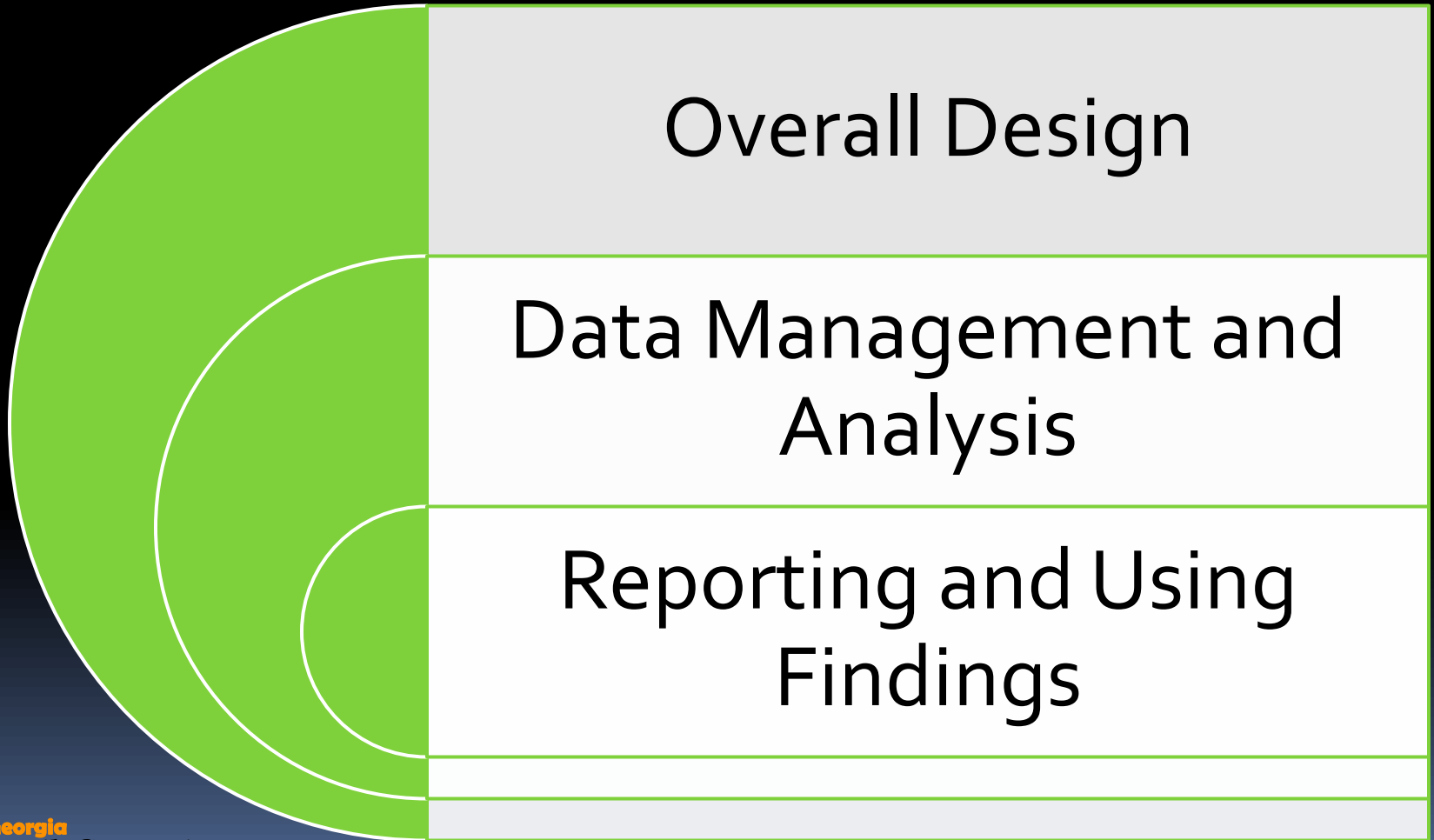
To Whom
Submitted

Data Collection Schedule Example

Character Education Student Survey

- Dates Collected: Beginning and End of Program
- Responsible Party: Program personnel
- Dates Submitted: Bi-Annually
- To Whom Submitted: Evaluation Manager

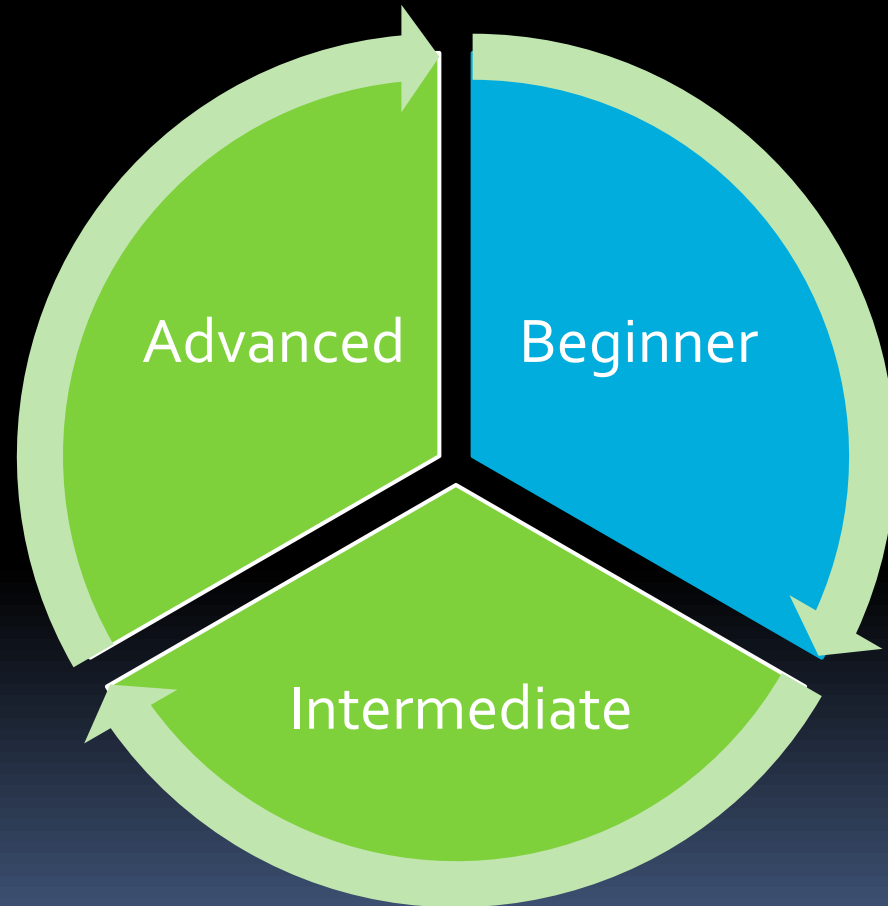
Final Core Elements-



Design and Data Management Example

- Overall Design: Pre-post Design
- Data Management and Analysis: Descriptive statistics will be conducted to describe the characteristics of the target group, programs and any major changes in the school achievement data. Pre-post analysis will be conducted using either Excel or SPSS on participant surveys and school achievement data. Individual level analysis will also be done using the data from the strategy database to determine if students participated in multiple programs and to describe what changes have occurred.

More About Do-It-Yourself Data Analysis





Do-It-Yourself Data Analysis

Beginner to Advanced

Data Management

- Paper, Pencil, Notebooks
- Excel Spreadsheet
- Access Database

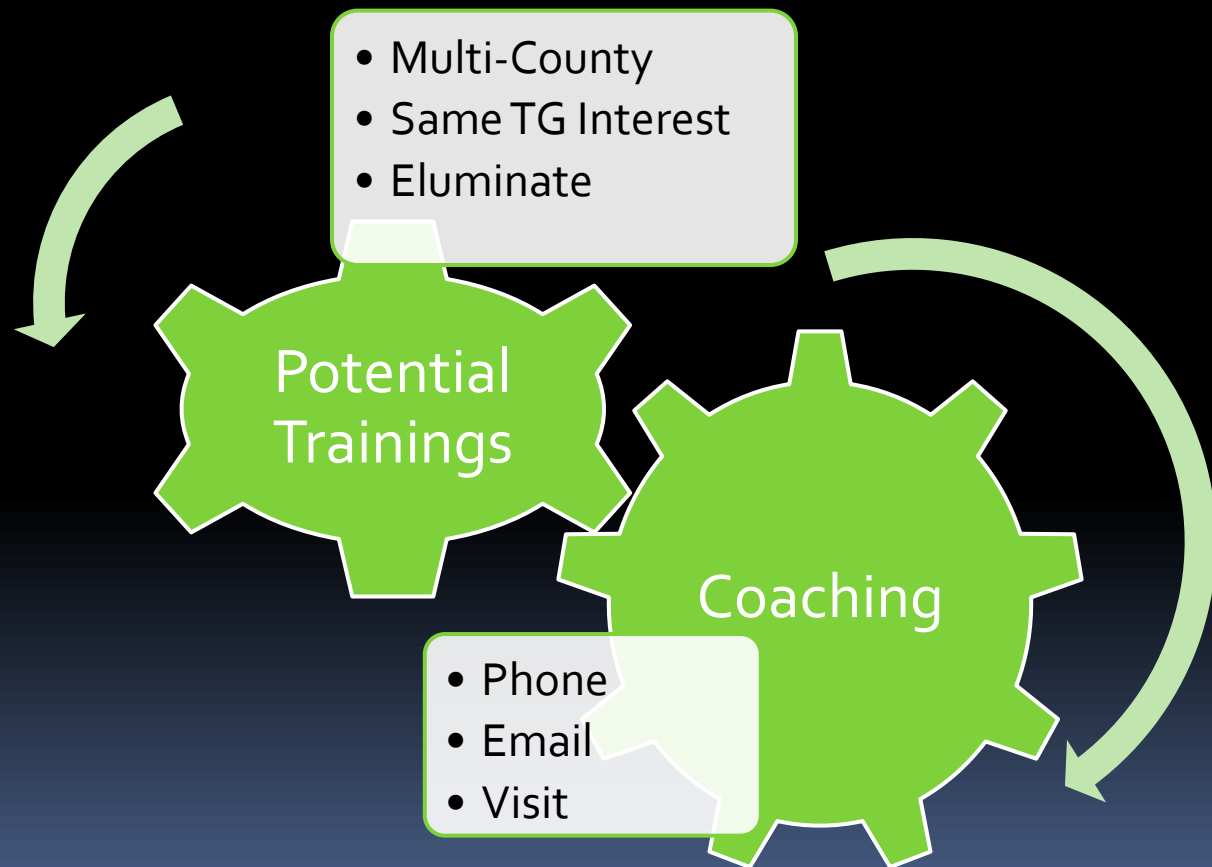
Analysis

- Descriptive Statistics
 - Means
 - Frequencies
 - Ranges
- Correlation
- ANOVA, Regression

Reporting and Using Findings Example

- Reporting and Using Findings:
- The local evaluator will provide quarterly updates and an annual evaluation report to the strategy team and the collaborative. The strategy committee will meet to review the quarterly report and discuss progress, barriers and any programmatic changes that may be necessary to strengthen the strategy. The annual report will be presented to the collaborative for discussion of any other adjustments that need to be made before the second and third years. Key findings from the evaluation report will be provided to parents, teachers and the community at large through the local newspaper and other community resources. Any positive results from the evaluation or lessons learned will be used to secure additional funding to for the programs and strategy.

Support – What You Can Expect?



You'll Never Be Alone!





Type questions in
chat box; Send to the
Room.